

## **ADP France National Employment Report: Private Sector Employment in France Increased by 8,300 Jobs in December 2021**

**NANTERRE, FRANCE – January 18, 2022** – Private sector employment in France increased by 8,300 jobs from November to December according to the December *ADP® France National Employment Report*. Broadly distributed to the public each month, free of charge, the *ADP France National Employment Report* is produced by ADP Research Institute® in collaboration with Moody's Analytics.

The report, which is derived from actual headcount data, measures the change in total nonfarm private employment each month on a seasonally-adjusted basis. It provides a timely look at labor market trends based on real employment data, and differs from unemployment reports which show the number of people looking for a job. The two indicators should, all other things held equal, go in opposite directions. However they may go in the same direction, especially when there are changes in the labor workforce, leading to more labor market entrants than job creation, for diverse reasons: demographic trends, cyclical movements or policy changes such as a higher retirement age.

### **December 2021 Report Highlights**

View the *ADP France National Employment Report* Infographic at [www.fr.adp.com/national-employment-report-france](http://www.fr.adp.com/national-employment-report-france).

**Total France Nonfarm Private Employment<sup>1</sup>: 8,300**

### **Industry Snapshot:**

- |                      |       |
|----------------------|-------|
| • Manufacturing      | 100   |
| • Trade              | 500   |
| • Financial Services | 1,100 |
| • Business Services  | 100   |
| • Transportation     | 0     |
| • Real Estate        | 0     |
| • Other <sup>2</sup> | 6,600 |

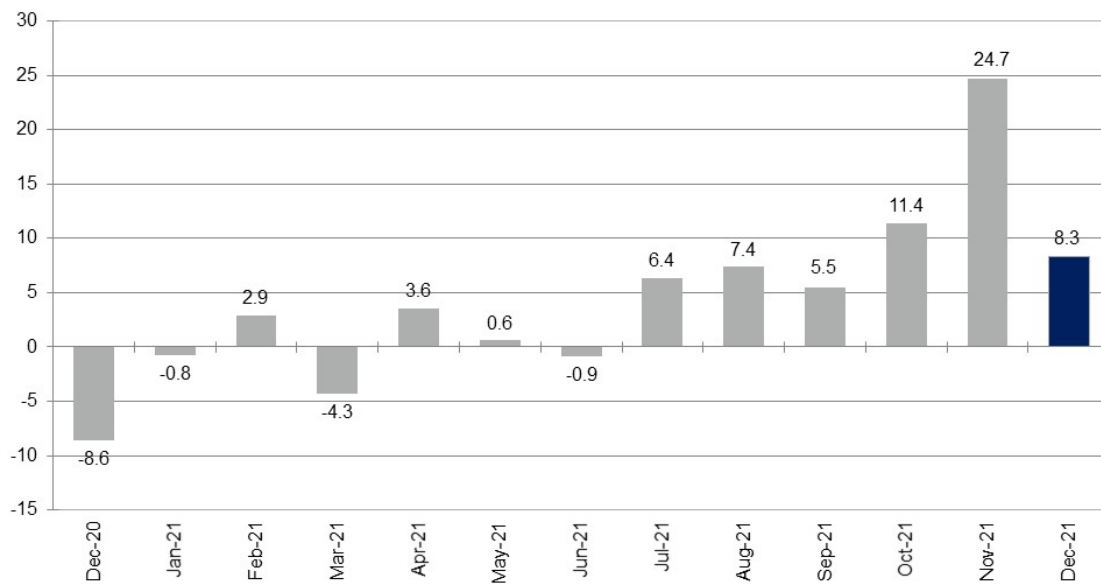
“December job growth was driven by financial services, trade and business services,” said Nela Richardson, chief economist, ADP. “While pandemic and supply chain issues have posed challenges, there are signs of a continued rebound in France’s economy in 2022, fueled by eased restrictions and increased demand for goods.”

---

<sup>1</sup> Including 16 industry sectors (cf. report [methodology](#))

<sup>2</sup> Other includes: Energy, Water and Waste, Construction, Accommodation and Food Services, Information and Communication, Public Services, and Household Services

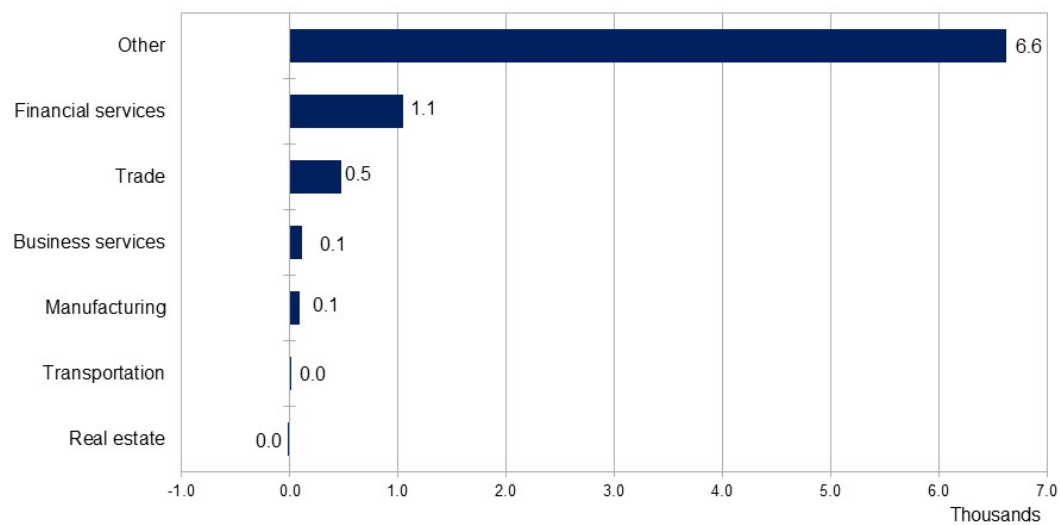
**Chart 1. Change in Total Nonfarm Private Employment  
Thousands**



Source: ADP Research Institute ©

**Chart 2. Change in Nonfarm Private Employment by Selected Industry  
Thousands**

December 2021



Source: ADP Research Institute ©

To obtain additional information about the *ADP France National Employment Report*, supporting data and the schedule of future release dates, or to subscribe to the monthly email alerts and RSS feeds, please visit [www.fr.adp.com/national-employment-report-france](http://www.fr.adp.com/national-employment-report-france).

The January 2022 *ADP France National Employment Report* will be released at 7:00a.m. ET/1:00p.m. CET on February 15, 2022.

#### **About the ADP France National Employment Report**

The ADP France National Employment Report is a monthly measure of the change in total France nonfarm private employment derived from declared aggregated headcount statistics from a sample of ADP® clients in France, issued at the level of establishments (non-identifiable). The report, which measures headcounts gathering nearly 1.5 million French workers, is produced by the ADP Research Institute®, a specialized group within the company that provides insights around employment trends and workforce strategy, in collaboration with Moody's Analytics, Inc.

Each month, ADP Research Institute issues the *ADP France National Employment Report* as part of the company's commitment to adding deeper insights into the labor market in France and providing businesses, governments and others with a source of credible and valuable information. The *ADP France National Employment Report* is broadly distributed to the public each month, free of charge.

For a description of the underlying data and the statistical model used to create this report, please see "*ADP France National Employment Report: Development Methodology*" at [www.fr.adp.com/national-employment-report-france](http://www.fr.adp.com/national-employment-report-france).

#### **About the ADP Research Institute**

The mission of the ADP Research Institute is to generate data-driven discoveries about the world of work, and to derive reliable economic indicators from these insights. We offer these findings to the world at large as our unique contribution to making the world of work better and more productive, and to bring greater awareness to the economy at large.

#### **About ADP (NASDAQ: ADP)**

Designing better ways to work through cutting-edge products, premium services and exceptional experiences that enable people to reach their full potential. HR, Talent, Time Management, Benefits and Payroll. Informed by data and designed for people. Learn more at [ADP.com](http://ADP.com)

*ADP, the ADP logo, Always Designing for People and the ADP Research Institute are registered trademarks of ADP, Inc. All other marks are the property of their respective owners.*

*Copyright © 2022 ADP, Inc. All rights reserved.*

#### **ADP-Media**

##### **Media Contacts:**

Nicolas Swiatek  
ADP, Inc.  
+33 1 55 63 59 38  
[nicolas.swiatek@adp.com](mailto:nicolas.swiatek@adp.com)